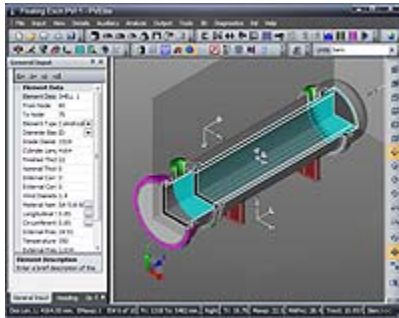


COADE PVElite Product Update

COADE
ENGINEERING SOFTWARE
Plant Focused. Industry Driven.™



Dear PVElite and CodeCalc user,

COADE, Inc. would like to thank you for your continued feedback and support and let you know that the 2009 versions of both PVElite and CodeCalc have been released.

PVElite 2009 Enhancements:

Analysis Features:

- The new ASME Section VIII Div. 2 2007 A-08 code and its databases includes:
 - Internal pressure calculations
 - External pressure calculations
 - Stresses due to combined loads
 - Horizontal vessel analysis
 - Nozzle analysis
 - Allowables for compression, buckling, and external pressure
 - Analysis of cone to shell junctions
 - Material databases from Tables 5A and 5B
- ASME Code 2008 updates, British and EN code material updates.
- Inclusion of ASME VIII-1 Appendices 1-10 and 1-9.
- Accurate ASME Division 1 Nozzle MAWP calculations.
- Additional improvements to gasketed tubesheet configurations.

Productivity Features:

- Modeling of round, circular and square vessel clips for different loads
- Ability to use ANSI flanges for heat exchanger analysis
- Flange design option added
- New MDMT calculation configurations
- Support lug analysis for hydrotest case

Internationalization Features:

- Chinese structural steel has been added.

Visualization Features:

- Updated user interface and updated help system
- Updated and faster 3D graphics, including a double cutting plane, and a "refresh" button.

External Interface and Output Features:

- Improved ASME VIII-1 U-1 and U-1A allows automatic PVElite data import
- Enhancements to output, with more details and clarifications

CodeCalc 2009 Enhancements:**Analysis Features:**

- ASME Code 2008 updates and British code material updates
- Inclusion of ASME VIII-1 Appendices 1-10 and 1-9
- MDMT is computed for every weld in the vessel-nozzle junction

Productivity Features:

- Interactive on-screen result display added for WRC-107 module and Half-pipe jacket modules
- Enhanced Vista compatibility features

External Interface and Output:

- Improved ASME VIII-1 U-1 form and added the U-1A form
- Updates and enhancements to the output

Products that interface with PVElite:

- CADWorx Equipment – import and export your PVElite models within the AutoCAD environment
- Foundation3d (www.dimsoln.com) – transfer data from your PVElite file to this foundation design software
- HTRI (www.htri.net) – import heat exchanger data automatically after process and thermal design

Products that interface with CodeCalc:

- Nozzle Pro (www.paulin.com) – perform FEA analysis on vessel-nozzle junctions

Other Resources:

- Pressure Vessel Discussion Forum. [Read more...](#)
- Reference materials, tips, FAQ. [Read more...](#)
- Training. [Read more...](#)